



# Dimensions

TRAVEL & STUDY TOUR Pte LTD

博偉遊學有限公司

TA01967

*where learning begins*

## Package 1B2 - Language Lesson + Legoland (Theme Park) + Malacca 9 Days 8 Nights Singapore + Malaysia Study Tour Itinerary

Updated on 10/10/2015\*\*\*\* Valid till 31/July/2016

DAY 天數	MORNING 上午	AFTERNOON 下午	EVENING 夜間活動
Day 1 (Sun)	<b>Arrival Singapore</b> <b>Check-in D'Resort or similar class accommodation</b> <a href="http://www.dresort.com.sg/">http://www.dresort.com.sg/</a>		Resort Orientation Dinner at Restaurant (Singapore Chicken Rice)
Day 2 (Mon)	Breakfast at Resort Placement Test / English Language Lesson at Dimensions (3 hours)	City Tour – Raffles Statue, Merlion Park, Esplanade Lunch at School Canteen 	Free & Easy Dinner at Restaurant
Day 3 (Tue)	Breakfast at Resort Coach transfer to Malaysia Johor Bahru Legoland	LEGOLAND® Malaysia (Theme Park) Lunch at Legoland 	Dinner at Malaysia (Coach transfer back to Singapore)
Day 4 (Wed)	Breakfast at Hotel Malacca Historical and City Tour	Malacca Historical and City Tour (with tricycle ride) Lunch at Malacca 	Dinner at Malaysia (Coach transfer back to Singapore)
Day 5 (Thu)	Breakfast at Resort Language Lesson at Dimensions (3 hours)	Chinatown, Orchard Road Lunch at School Canteen 	Free & Easy Dinner at Restaurant
Day 6 (Fri)	Breakfast at Resort Language Lesson at Dimensions / Certificate Presentation (3 hours)	Newater and City Gallery Lunch at School Canteen 	Free & Easy Korean BBQ Farewell Dinner



Dimensions

11 Collyer Quay #14-04/05 The Arcade  
Singapore 049317  
Tel: (65) 9754 5477 Fax: (65) 6733 9595  
Email: studytour@studytour.com.sg

[www.studytour.com.sg](http://www.studytour.com.sg)

Any enquire please email to: [studytour@studytour.com.sg](mailto:studytour@studytour.com.sg)  
Or call hotline +(65) 9754 5477





# Dimensions

TRAVEL & STUDY TOUR Pte LTD










博偉遊學有限公司

TA01967

*where learning begins*

## Package 1B2 - Language Lesson + Legoland (Theme Park) + Malacca 9 Days 8 Nights Singapore + Malaysia Study Tour Itinerary

Updated on 10/10/2015\*\*\* Valid till 31 July 2016

<p>Day 7 (Sat)</p>	<p style="text-align: center;">Breakfast at Resort</p> <p style="text-align: center;">Sentosa Island – S.E.A Aquarium, Luge &amp; Skyride and Wing Of Time</p> <p style="text-align: center;">Lunch &amp; Dinner at Sentosa Island</p> <div style="display: flex; justify-content: space-around;">      </div>	
<p>Day 8 (Sun)</p>	<p style="text-align: center;">Breakfast at Resort</p> <p style="text-align: center;">Universal Studios</p> <p style="text-align: center;">Lunch &amp; Dinner at Universal Studios</p> <div style="display: flex; justify-content: space-around;">      </div>	
<p>Day 9 (Mon)</p>	<p style="text-align: center;">Breakfast in Resort</p> <p style="text-align: center;">Check-out Resort</p>	<p style="text-align: center;">Enjoy resort facilities till transfer to Airport</p> <p style="text-align: center;"><b>Home Sweet Home</b></p>

Note: The sequence of the itinerary may change with or without prior notice to ensure smooth running of the program.

**For price please contact the below:**  
**Alvin Heng (International Director)**  
**Email: [studytour@studytour.com.sg](mailto:studytour@studytour.com.sg)**  
**Hotline: +(65) 9754 5477**



11 Collyer Quay #14-04/05 The Arcade  
Singapore 049317  
Tel: (65) 9754 5477 Fax: (65) 6733 9595  
Email: [studytour@studytour.com.sg](mailto:studytour@studytour.com.sg)

[www.studytour.com.sg](http://www.studytour.com.sg)

Any enquire please email to: [studytour@studytour.com.sg](mailto:studytour@studytour.com.sg)  
Or call hotline +(65) 9754 5477







# Dimensions

TRAVEL & STUDY TOUR Pte LTD

博偉遊學有限公司

TA01967

*where learning begins*

## Package 1B2 - Language Lesson + Legoland (Theme Park) + Malacca 9 Days 8 Nights Singapore + Malaysia Study Tour Itinerary

Updated on 10102015\*\*\*\* Valid till 31July2016

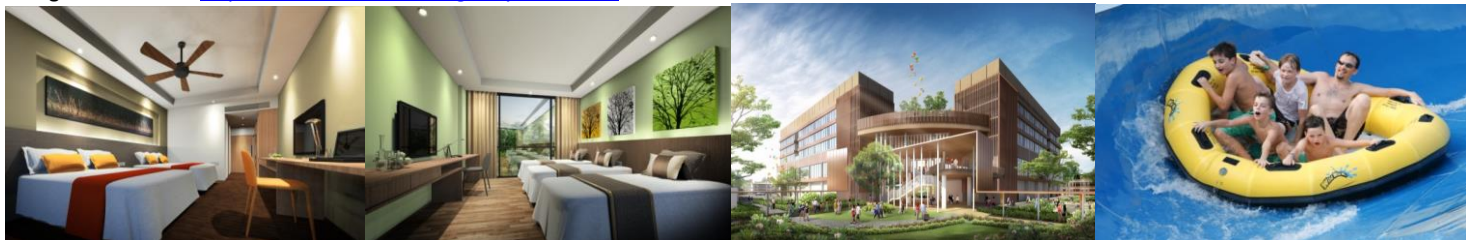
### About D'Resort:

D'Resort @ Downtown East is Singapore's first nature-inspired resort with an integrated waterpark experience situated just 12 minutes' drive from Singapore Changi Airport. Be surrounded in tranquility with close proximity to Pasir Ris beach. Every room is designed with your comfort in mind.

Right next to D'Resort @ Downtown East is one of Singapore's largest waterpark, Wild Wild Wet. From adrenalin-pumping rides for the thrill seekers to relaxing and gentle ones for families and children, there's fun under the Sun for everyone every day of the week! As a one-stop leisure destination, you get to enjoy a variety of mouth-watering treats from all-day dining offerings at Downtown East.

2 Queen Beds room: <http://www.dresort.com.sg/stay/mangrove-walk>

3 Single Beds room: <http://www.dresort.com.sg/stay/rainforest>



### Remarks:

1. Rate valid till 31 July 2016
2. Accommodation is subject to availability
3. All optional or extra activities will be charge accordingly.
4. If the arrival flight is before 12pm and the departure flight is after 2pm, only lunch box will be provided.
5. \*FOC (Free of Charge) group leader base on triple sharing room with students
6. Rates quoted subject to change with or without prior notice

### Package Includes:

- Accommodation at D'Resort @ Downtown East or similar class accommodation
- English or Mandarin Speaking Guide, Airport transfers, transportation as per itinerary and Admission fees to above attractions
- Lessons as per itinerary and conducted in English
- Meals provided as per itinerary
- 1 bottle of 500ml drinking water per person per day during tour

Package Excludes: Air ticket, Luggage Overweight Charges, Visa, Telephone bills, Medical bills, Insurance & Personal expenses

Payment: 50% deposit 8 weeks in advance to secure accommodation and balance payment made not later than 4 weeks before arrival date. Booking will be released should payment not received by then.

### Extra group leader/teacher charges (without lesson):

15-16 paxs extra leader charge 85%	20-23 paxs extra leader charge 85%	30-33 paxs extra leader charge 85%
17-18 paxs extra leader charge 80%	24-26 paxs extra leader charge 80%	34-36 paxs extra leader charge 80%
19 paxs extra leader charge 75%	27-29 paxs extra leader charge 75%	37-40 paxs extra leader charge 75%

### Cancellation Policy:

Notice us 8 weeks or more in advance for cancellation: No charges		Notice us 8-6 weeks in advance for cancellation: charge 15% of total cost
Notice us 6-4 weeks in advance for cancellation: charge 30% of total cost		Notice us 4-2 weeks in advance for cancellation: charge 50% of total cost
Notice us 2-1 weeks in advance for cancellation: charge 70% of total cost		Notice us 1 week or less for cancellation: charge 100% of total cost



## Dimensions

11 Collyer Quay #14-04/05 The Arcade  
Singapore 049317  
Tel: (65) 9754 5477 Fax: (65) 6733 9595  
Email: [studytour@studytour.com.sg](mailto:studytour@studytour.com.sg)

[www.studytour.com.sg](http://www.studytour.com.sg)

Any enquire please email to: [studytour@studytour.com.sg](mailto:studytour@studytour.com.sg)

Or call hotline +(65) 9754 5477

